

Find the product of 6,243 and 53.

ISN
pg 25

$$\begin{array}{r}
 \overset{1}{6}, \overset{2}{2} \overset{1}{4} \overset{3}{3} \\
 \times \quad 53 \\
 \hline
 18729 \\
 + 312150 \\
 \hline
 330879
 \end{array}$$

330,879

12. What would be a reasonable estimate for the product of 6,243 and 53?

5.NBT.5
ISN pg 25

6,000 x 50 = 300,000

13. Without finding the values, write a sentence that compares the values of Expression G and Expression K.

5.OA.2
ISN pg 24

Expression G: $4,632 - 524$

Expression K: $3 \times (4,632 - 524)$

Expression K is 3 times the value of Expression G.

14. Write more than one expression that represents 14 added to the product of 2 and 7?

5.OA.1
ISN pg 24

$$\begin{array}{l}
 14 + (2 \times 7) \\
 (2 \times 7) + 14
 \end{array}$$

15. Which expression(s) has (have) a value of 14? Select all that apply.

5.OA.1
ISN pg 196

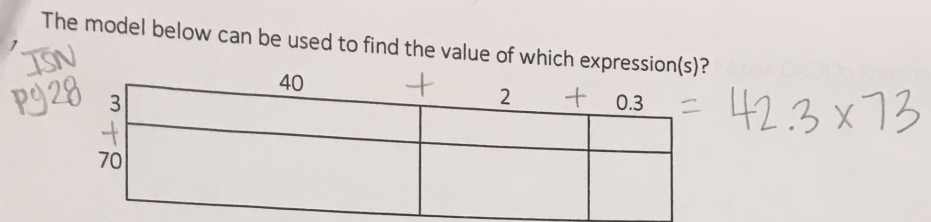
- A. $(12 - 6) \div 2 \times 4 = 6 \div 2 \times 4 = 3 \times 4 = 12$
- B. $(9 \times 7) - (7 \times 7) = 63 - 49 = 14$
- C. $10 + (11 \times 2) - 7 = 10 + 22 - 7 = 32 - 7 = 25$
- D. $12 + 5 \times (8 - 6) = 12 + 5 \times 2 = 12 + 10 = 22$
- E. $(12 - 10) \times (8 + 2) - 6 = 2 \times 10 - 6 = 20 - 6 = 14$
- F. $2 \times (3 \times 4 + 3) - 6 = 2 \times 15 - 6 = 30 - 6 = 24$

16. At the store, all customers were given a book of coupons as they entered the store in one weekend. If each book of coupons holds 13 coupons and there were a total of 524 customers who entered the store, how many coupons were given in all?

ISN pg 25

$$\begin{array}{r}
 524 \\
 \times 13 \\
 \hline
 1572 \\
 + 5240 \\
 \hline
 6812
 \end{array}$$

TS: 6,812 coupons were given in all.



- A. 4.23×73
- B. $(70 + 3) \times (40 + 2 + 0.3)$
- C. $(70 \times 3) + (40 \times 2 \times 0.3)$
- D. 73×423
- E. 42.3×73

18. A roller coaster has 4 sections that each hold a maximum of 15 people. If the ride is filled to capacity for every ride, how many total people will have ridden the roller coaster after 144 rides?

TS: A total of 8640 people will have ridden the roller coaster after 144 rides.

$$4 \times 15 \times 144 = 60 \times 144$$

$$\begin{array}{r} 22 \\ 144 \\ \times 60 \\ \hline 8640 \end{array}$$

19. Simplify the expression below.

5.OA.1

$$5 + 4 \times (14 - 8)$$

$$5 + 4 \times 6$$

$$5 + 24 = \textcircled{29}$$

20. Mary carried one box that weighed 10.5 pounds and another box that weighed 7 pounds into her new house. How many ounces do both boxes weigh altogether?

TS: Both boxes weigh 280 ounces altogether. $17.5 \text{ lb} = \underline{280} \text{ oz}$

$$10.5 \text{ pounds} + 7 \text{ pounds} = 17.5 \text{ pounds}$$

$$= 17.5 \times (16 \text{ oz})$$

$$= 17.5 \times (16 \text{ oz})$$

21. Mandy has walked her dog every day for 3 weeks. If she walks her dog every day for one more week, how many total days will she have walked her dog altogether?

TS: Mandy will have walked her dog 28 total days.

$$3 \text{ weeks} + 1 \text{ week} = 4 \text{ weeks}$$

$$4 \text{ weeks} = \underline{28} \text{ days}$$

$$= 4 \times (1 \text{ week})$$

$$= 4 \times (7 \text{ days}) = 28 \text{ days}$$